

# Dual Sensor Camera

# DC-TH2011



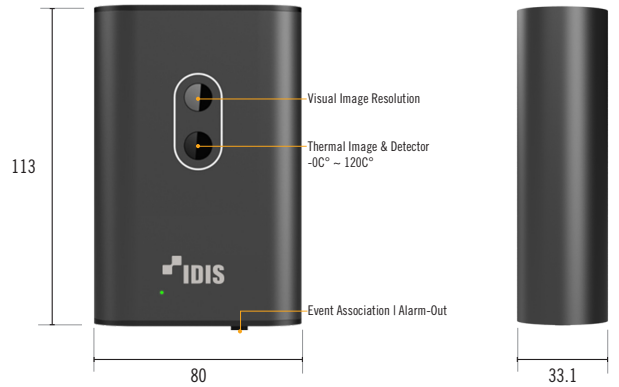
- Dual Sensor (Thermal+Sensor) IP Camera
- 3Mode Display Support (Visual / Thermal / Overlay)
- Onvif-compliant
- Up to 10 Points of Temperature Probing
- Visual / Thermal Overlay Mode
- Alarm Activation by Temperature Threshold



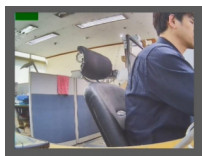
## SPECIFICATIONS

Feature		
Thermal Image	IR Sensor Frame Rate	< 9 Hz
	IR Sensor Resolution	80 (H) x 60 (V) Pixel
	Spectral Range	LWIR, 8 to 14µm
	Field of View (FOV)	51° HFOV, 63.5° Diagonal (f/1.1 Silicon Double)
	Temperature Sensitivity	< 50 mK (0.05°C)
	Temperature Range	0°C ~ 120°C
Visible Image	CMOS Sensor	1/3.2 inch Sony CMOS Progressive Scan
	Effective Pixels	1280 (H) x 960 (V) : 1.23M
	Min. Illumination	0.05 Lux / F#1.4
	Focal Length	4.3mm
	Frame Rate	30fps
	Resized Resolution	Max: 1280(H) x 960(V) Min: 720(H) x 540(V) Pixel
	Multi User Access	10 (RTSP Streaming)
Others	Alarm Out	1 Port (Dry Contact, Relay out)
	Operating Temperature	0°C ~ +50°C (32°F ~ +122°F)
	Power	PoE(802.3.af), DC12V
	Power Consumption	3.9W
	Dimension (WxHxD)	80 x 113 x 33.1(mm), 80 x 113 x 41mm Foot(Incl Bracket)
	Weight	320g

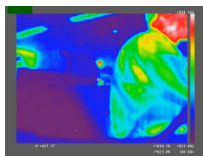
## DIMENSION



## Visual/Thermal Overlay Mode



Visual Image  
Stream#1 @ 1.2MP



Thermal Image (Color)  
Stream#2 @ 80 x 60



Overlaid Image (Color)  
Stream#3 @ 720 x 540

## Case Study



Tunnel



Coal Conveyor



Valve



Garbage Yard



Warehouse

## Multiple Points of Temperature Measurement

Up to 10 Points of Simultaneous Temperature Probing

